

Medical Entomology Centre



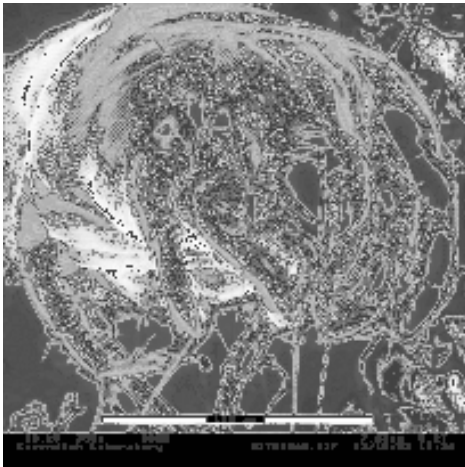
Insect Research & Development

Cambridge House
Barrington Road
Shepreth
Royston
Hertfordshire
SG86QZ

www.insectresearch.com

APR/01

4 April 06



MARSHALLING FORCES AGAINST THE MITE

Medical Entomology Centre, Nr. Cambridge
helps with research and advice on
House Dust Mite programme.

Dispatches, Channel 4
6 April 2006 9pm

Research and advice provided by Medical Entomology Centre, Shepreth, near Cambridge, has helped with background information for Channel 4's Dispatches programme on Asthma to be screened this Thursday, 6 April at 9pm.

This week's documentary 'How To Beat Your Kid's Asthma' centres on the increasing incidence of asthma and allergies that are affecting our children. Referred to as the 21st century epidemic, they are estimated to account for 6% of all GP consultations.

Toby Wilkinson of Medical Entomology Centre, says:

"MEC and its university partners have been involved with the making of the programme from the beginning, providing information on house dust mites, a major trigger and possible cause of allergic disease, especially asthma."

Telephone:

01763263011 Fax

csimile:01763263022

1

“Housedustmitesarenotinsects;theyaremorecloselyrelatedtospidersandscorpions. Theirfaecalpelletscontainanumberofpotentallergens thatrendersthehousedustmiteasanurbanpest.

“Wemonitoredconditionswithinpremisesusedinthefilm,bothbeforeandaftertheinterventionsandtheresultsclearlyillustratedtheadvantagesoftakingaction.Itwasreallyrewardingtoseethebenefitstothehealthofthechildren.”

MedicalEntomologyCentrehasbeenprominentincarryingoutresearchonthesemicroscopicorganismsandisoneoftheprincipleestablishmentstestingnewproducts,fabricsandtreatmentsdesignedtoridthehomeofhousedustmitesandtheirallergens.

NOTESTOEDITORS:

ForfurtherinformationaboutMedicalEntomologyCentreandresearchintodustmites, contactTobyWilkinsonon01763263011.

Illustrationsofdustmitesoraccesstolaboratoryfilmingcanbearrangedbycontactingthesamenumbers.